



SA Power Networks

Empowering South Australia

## Flexible Exports

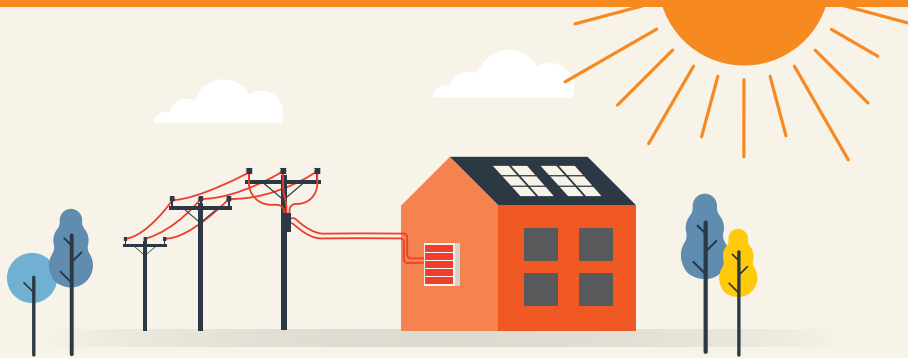
Enabling more solar for South Australians

### Our Goal: Double the amount of Solar on our network by 2025

#### It's a challenging goal.

Excess solar exports can lead to:

- ⊖ unstable supply
- ⊖ local voltage issues
- ⊖ potentially wider outages



### The Solution: Flexible Exports

Solar exports automatically adjust to match the available capacity on the network.

No change for current solar customers.

New and upgrading solar customers connecting in overloaded areas can choose a new Flexible Export option (up to 10kW) or a flat Fixed Export option (1.5kW).

What does this mean for you? It's simple.

1

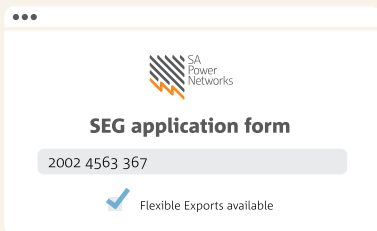
Check if your customer is offered the new Flexible/Fixed export option

2

Talk to them about these options

3

Select the preferred option when applying



Look up their NMI on our SEG application form

#### NEW and UPGRADING CUSTOMERS

connecting in overloaded areas can choose between:

##### FLEXIBLE EXPORTS

Export up to

10.00 kW

Must use compatible smart solar systems

##### FIXED

Export up to

01.50 kW

Must use approved export limiting inverter device



#### Flexible Exports

- ✓ greater exports into the network
- ✓ variable exports up to 10kW per phase
- ✓ safer and more reliable electricity supply
- ✓ allows more people to benefit from solar
- ✓ world-leading technology
- ✓ more renewable energy in South Australia

Find out more: [sapowernetworks.com.au/industry/flexible-exports](http://sapowernetworks.com.au/industry/flexible-exports)