



**EMPLOYEE
FOUNDATION**
















SA Power Networks
Enerven



2020
Annual Report

~~~~~  
**Supporting  
South Australia**

# Contents

|                                                                                     |    |
|-------------------------------------------------------------------------------------|----|
| Our 2020 focus                                                                      | 2  |
|    |    |
| Our vision                                                                          | 3  |
|    |    |
| Overview of our achievements in 2020                                                | 4  |
|    |    |
| Executive reports                                                                   | 5  |
|    |    |
| Our bushfire response                                                               | 6  |
|    |    |
| Addressing disadvantage                                                             | 7  |
|    |    |
| Tackling mental health                                                              | 9  |
|   |    |
| Fighting cancer                                                                     | 10 |
|  |    |
| Improving access for the deaf and hard of hearing                                   | 11 |
|  |    |
| Our COVID-19 response                                                               | 12 |
|  |    |
| About our Foundation                                                                | 13 |
|  |    |
| Lifetime Achievement Awards                                                         | 14 |
|  |    |
| Financial report                                                                    | 15 |
|  |    |
| Cumulative donations to charities                                                   | 17 |
|  |    |
| Photos                                                                              | 18 |
|  |    |



# Our 2020 focus

In a year like no other, we were called to action many times, and often urgently. We started the year responding to the terrible bushfire crisis, closely followed by the unfolding impact of COVID-19. Our support for the South Australian community was needed more than ever.



# Our vision

The aim of the Employee Foundation is to enable our employees, and their families and friends, to make a positive contribution to the South Australian community. We do this through donations, fundraising and volunteering.

1. Alex Bond and Matthew Pugsley - Relay For Life
2. Graham Holt, Saibeth Walls and Nathan Morelli - Loud Shirt Day
3. David Paynter - Push-Up Challenge
4. Carissa Davison and Anthony von der Borch - Backpacks 4 SA Kids
5. Christmas gifts for Backpacks 4 SA Kids
6. Movember Golf Day
7. Frocking up for Frocktober
8. Mick and Caroline Pell and their dog Henley - Relay For Life
9. David Crook and Prakhar Dwivedi - Loud Shirt Day
10. Women's and Children's Hospital Foundation cheque presentation

Reached  
**\$200,000**  
in donations to Hutt St Centre

**\$97,800**

donated in response to  
South Australian bushfires

Reached  
**\$350,000**  
in donations to Women's and  
Children's Hospital Foundation

Overview of our  
achievements in  
**2020**

**378**

volunteer hours

Reached  
**\$100,000**

in donations to Nature Foundation

**\$552,600**

donated to South Australian charities

**709**

payroll donors



# Executive reports

## Chairperson report

**Better and better! Everything about the Employee Foundation improves every year!**



It is with great pleasure and enormous pride that I commend the efforts of everyone that supported the Employee Foundation during 2020. By pulling together through a challenging year, we really helped to make a difference to the South Australian community and those facing real adversity and hardship.

Thanks to the amazing efforts of our employees, we raised almost \$100,000 to support the people, animals and environment so significantly impacted by bushfires at the start of the year.

COVID-19 impacted our ability to participate in some of our normal volunteering and fundraising activities, but the funds raised by the Foundation during the year enabled us to give extra financial support to the charities most impacted by the pandemic.

The loyal support of our employees enabled us to raise over \$500,000, with a significant portion of those funds donated through regular salary sacrifice donations. We also used \$50,000 of our reserves in order to make donations to charities totalling over \$550,000!

Despite the pandemic, it was also very pleasing to see the commitment of our employees through participation in 37 Workplace Initiatives and a range of volunteering opportunities.

I am again very grateful to the untiring efforts of the Foundation's Executive Officer, Vicki Shearer, and the support of the Management Committee, the Trustees, and the organisation.

Let's hope that 2021 brings better fortune for everyone in our community.

**David Syme**  
Chairperson

---

## Executive Officer report

**2020 was another huge year for the Employee Foundation with the achievement of a number of new milestones.**



Surprisingly, while different, 2020 was still a very busy year in the Employee Foundation. It was a year of jumping through hoops to get events and volunteering happening, but as this Annual Report will show, we were still very active.

It is a credit to our people that they still wanted to step up and support the South Australian community, even with the distractions and stresses of our new way of life.

We still connected (as best we could), we still had fun, we still helped each other and the charities we support, and we still managed to donate over \$550,000 to support the South Australian community.

I want to thank SA Power Networks and Enerven for their wonderful support, the Foundation Trustees and Management Committee, the volunteers, the people who ran Workplace Initiatives and of course, every employee who donated either via payroll or at events in 2020. Thanks, and big virtual hugs to you all!

**Vicki Shearer**  
Executive Officer

# Our bushfire response



Through the generosity of our staff and business, we donated \$75,000 to support people affected by the Cudlee Creek and Kangaroo Island fires, through the State Emergency Relief Fund. These funds were used to give immediate grants to people impacted by the fires, including families of people who died, seriously injured individuals, and households whose principal place of residence was destroyed.

In addition to the bushfire appeal, the Employee Foundation donated \$10,000 each to Nature Foundation, and Breakthrough Mental Health Research Foundation. Nature Foundation used the funds for habitat restoration for the red-tailed black cockatoo and other native animals. Breakthrough introduced a program of training for mental health first aid officers - to be able to monitor the mental health of people in bushfire affected areas and raise awareness of mental health for members of impacted communities.

Employees at our Port Pirie depot also raised funds for Nature Foundation, along with Keswick employees raising funds for the Adelaide Koala and Wildlife Hospital and our Mount Barker depot raising funds for BlazeAid following the bushfires.

Overall, \$97,800 was donated from the Employee Foundation in response to the bushfire crisis.



**Nature  
Foundation**



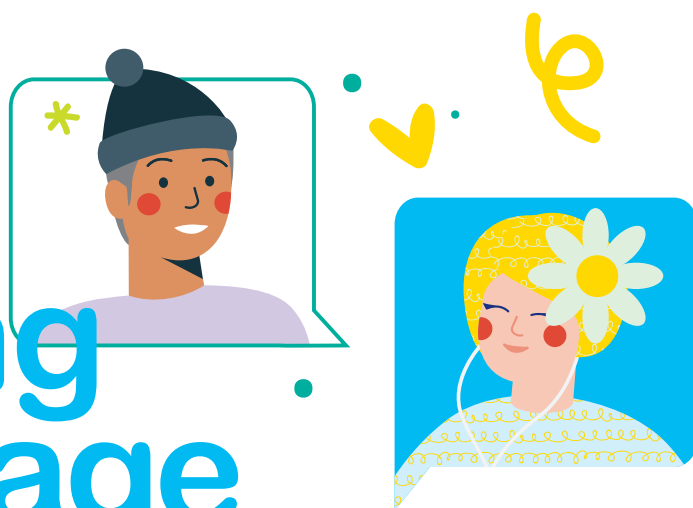
**BREAK  
THROUGH**

mental health  
research  
foundation



1. State Emergency Relief Fund cheque presentation

# Addressing disadvantage



## Foodbank SA

Staff from around the business donned their finest Capitol and District outfits for a virtual Hunger Games themed morning tea, raising money for Foodbank SA.

As our staff worked from the comfort of their homes, their thoughts went to those who weren't living in comfort, and perhaps even going hungry. Kylie Kerrigan and Tonya Stevens organised the online morning tea with multiple staff from around the business dressing up and attending.

For every dollar donated, four meals are provided to people experiencing food insecurity across South Australia. Kylie and Tonya were thrilled to exceed their donation goal and raised nearly \$2,000 for Foodbank SA, which the Foundation matched dollar for dollar, providing 8,000 meals.

Later in the year we had staff volunteer at Foodbank SA to pack Christmas hampers. Our volunteers set the record for the greatest number of hampers packed in a session at 540 hampers! We also did a non-perishable food collection and donation drive in the lead up to Christmas, resulting in a truck load of food and \$8,100 donated.



## Hutt St Centre

A group of SA Power Networks staff embraced the cold conditions on a Friday morning in August to participate in Hutt St Centre's 'Walk a Mile in My Boots' challenge.

Unlike previous years, due to COVID-19 restrictions, the walk was completed in individual smaller groups across South Australia instead of a collective group.

Our group walked over 10 kilometres through the Adelaide Hills to raise awareness and funds for Hutt St Centre. As a result of their efforts, \$10,300 was donated.

Each year, Hutt St Centre serves around 40,000 meals and offers social work and support services to nearly 2,000 people. Staff from SA Power Networks and Enerven have volunteered their time to serve breakfast every Tuesday morning at Hutt St Centre for 14 years.

The total amount donated to Hutt St Centre in 2020 was \$27,800.



## UnitingSA Port Adelaide

UnitingSA Port Adelaide have been long term Employee Foundation partners, being the recipients of our Christmas toy drive for eight years. We also have staff volunteer with UnitingSA Port Adelaide each year to hand out Christmas gifts. In addition to our regular support of those living in poverty in the area, we donated \$11,830 to UnitingSA Port Adelaide in 2020.



1. Vicki Shearer, Kylie Kerrigan and Tonya Stevens presenting a cheque to Foodbank SA CEO Greg Pattinson
2. Staff dressed up in their best Hunger Games inspired outfits
3. Walk a Mile in My Boots team
4. Hutt St Centre cheque presentation





### Backpacks 4 SA Kids

We were able to continue our volunteering with Backpacks 4 SA Kids throughout 2020 as they are deemed an essential service. Backpacks 4 SA Kids were grateful for the support as many of its regular volunteers are retirees and were advised to self-isolate as much as possible at the height of the pandemic. During December, we also held our annual Christmas gift wrapping shift, with 25 staff from across the business coming together to wrap presents for kids.

In addition to 120 hours of volunteer time in 2020, the Employee Foundation donated a massive \$18,600 to Backpacks 4 SA Kids to support displaced children and give them a sense of self-worth and fun.



### Puddle Jumpers

Executive Coach, Kerin James chose to donate her fees to charity rather than being paid for her services to our business in 2020. Kerin asked if the funds could go to Puddle Jumpers, a charity that equips young people with the confidence and skills to assume more control and make informed choices in their everyday lives. As a result of Kerin's efforts, \$2,000 was donated to Puddle Jumpers.

### White Ribbon Australia

Kate Murray and Isabell Al-Nahat organised a raffle to raise funds for White Ribbon Australia to help stop men's violence against women. 2020 saw a terrible increase in domestic and family violence and Kate and Isabell were compelled to try and help stop the trend. Their efforts resulted in \$3,500 being donated to White Ribbon Australia.

### Cystic Fibrosis SA - Sam's Shave

Sam Hentschke from our Mount Gambier depot wanted to raise funds for Cystic Fibrosis SA and shaved off his hair, eyebrows and beard for the cause. Sam lives in a small country town and has seen the impact of cystic fibrosis on three different people locally. Sam's goal was to raise \$3,500, but after his amazing efforts and dollar matching from the Employee Foundation, he ended up with a massive \$11,000 for Cystic Fibrosis SA.



1. Backpacks 4 SA Kids Christmas gift wrapping
2. Sam Hentschke before the shave
3. Vince Steiner and Sam Hentschke after the shave

# Tackling mental health



## Headspace - Push-Up Challenge

Our staff put their muscles to work in 2020, to help tackle mental health issues.

With a strong focus on mental health amidst the COVID-19 pandemic, we encouraged staff to test their strength and sign up to Headspace's Push-Up Challenge to raise funds for youth mental health.

Organiser David Paynter said raising funds for organisations that support suicide prevention and promote mental health awareness during that time was vital.

Participants shared photos of themselves doing their daily tally of push-ups in a variety of locations via Microsoft Teams, with a distinct competitive edge rising along the way.

The push-up efforts resulted in a donation of \$8,100 to Headspace. Some of the Push-Up Challenge team visited Headspace in the Adelaide CBD and had a tour of its premises. The team received overwhelming gratitude and hospitality and were very impressed with the organisation's work.

## Movember

Movember has been a popular cause with our staff for over five years, with several depots and head office staff participating numerous times.

The Movember Foundation focuses on three key areas of men's health; prostate cancer, testicular cancer and mental health. As a significantly male dominated organisation, improved men's health can lead to a healthier, happier workforce.

In 2020 we saw a different version of the Movember event, but still with facial hair, a few rounds of golf and funds raised.

Tim Strout, from our Mount Barker depot has been playing golf and raising funds for Movember for five years. Tim's golf club, Nairne, and his partner clubs from local areas have managed to donate over \$10,000 to the Movember Foundation, with the Employee Foundation's support.

Joe Caruso from Customer and Community also decided to shave off his trademark (Santa) beard in support of men's mental health. Joe was stunned and quite humbled by the incredible support he had from his colleagues and the businesses he deals with as Major Customer Manager. Joe raised an incredible \$8,695, with the Employee Foundation contributing a further \$5,000 to the Movember Foundation.



## Royal Society for the Blind

The Employee Foundation has been sponsoring an Operation K9 assistance dog, through Royal Society for the Blind (RSB) for three years. These dogs assist returned veterans with managing their post-traumatic stress disorder and enable them to participate more fully in life.

In 2020 our sponsored dog Veiko went to a veteran who lives with post-traumatic stress disorder. Veiko and the veteran were matched early in Veiko's training and Veiko's placid nature was perfect for his new best friend. They have since become inseparable and the veteran credits his newfound ability to do everyday things such as shopping, to Veiko.

Employee Foundation Executive Officer, Vicki Shearer and Business Service Officer, Sharon Michelmore met Veiko and his owner when they presented the RSB with a donation of \$5,500.

The team at RSB and Veiko's owner were truly touched by the generosity of our staff, towards someone they didn't know.



1. Push-Up Challenge team (composite image)
2. Joe Caruso before shave
3. Joe Caruso after shave
4. Tim Strout - Movember
5. Vicki Shearer and Sharon Michelmore presenting a cheque to Royal Society for the Blind



# Fighting cancer



## Ovarian Cancer Research Foundation - Frocktober

Our Frocktober event included glitter stations, a photo booth, "Best Frock" competition and opportunities for raising much needed funds through a wine raffle and sponsorship of frock wearers.

Customer and Community's Leigh Cardinal led the event, and the fundraising was supported by the Employee Foundation and some wonderful volunteer helpers.

The team's effort resulted in a donation of \$4,100 to the Ovarian Cancer Research Foundation.



## Cancer Council SA - Relay For Life

Our Relay For Life event was a much smaller and shorter event than in previous years, but still meaningful and fun for those that got to participate. We discussed cancelling in 2020 due to all the logistical challenges, but the Committee wanted to forge ahead. People from around the business met at the parklands across the road from Cancer Council SA's Flinders Lodge, to celebrate cancer survivorship, remember loved ones lost and empower teams of families, friends and colleagues to raise money to fight back against cancer. It's such a special event for us and it was our 12th year in a row hosting our own Relay For Life.

A total of \$38,580 was donated to Cancer Council SA from the Employee Foundation in 2020.



## Garvan Institute of Medical Research

The Garvan Institute of Medical Research is a cancer research centre that holds clinical trials for people with cancer when there are no other treatment options left.

Jake Renney from our Morphett Vale depot participated in a head shave with his young cousin Oli. Both Jake and Oli lost their fathers to a rare form of cancer and shaved their heads together to raise funds in appreciation for Oli's father's treatment and participation in clinical trials here in Adelaide through Garvan.

Jake and Oli's family and friends, and his work colleagues donated to the event and, with dollar matching from the Employee Foundation, \$11,000 was donated to the Garvan Research Foundation.



1. Vicki Shearer and Anthony von der Borch - Relay For Life
2. Vicki Shearer, Richelle Patrick, Vicki Skidmore and Leigh Cardinal - Frocktober
3. Jake Renney, with his cousin Oli and friend after shave

# Improving access for the deaf and hard of hearing



## Australian Lions Hearing Dogs

Australian Lions Hearing Dogs take rescued dogs from shelters and train them to be assistance dogs for the deaf, to bring them confidence and a feeling of safety as they venture out into the world. Losing your hearing can be quite isolating and frightening and the assistance dogs make a huge impact.

During the last half of 2019 and the first half of 2020, the Employee Foundation contributed to the training of two new assistance dogs, named by our employees - Jake and Raffles. We had the pleasure of meeting Jake and Raffles in person at our Keswick offices, which was a welcome distraction.

Both our puppy friends graduated and went to their forever homes and our new sponsored puppy Elle started her training towards the end of the year. The Employee Foundation donated \$20,000 to Australian Lions Hearing Dogs in 2020.



## Can:Do 4Kids - Loud Shirt Day

Loud Shirt Day has been a popular event with our staff for a number of years. Despite restrictions, we were able to host a COVID-19 safe version of Loud Shirt Day, featuring a photo booth and a visit from Can:Do 4Kids staff, including a deaf mum and her newborn baby.

General Manager Customer and Community Jessica Vonthethoff judged the Loud Shirt Day competition at our Keswick office, with many staff dressing colourfully for the occasion. Winners included Archangelo Sangu and Suzie Lochert (and her son Robin) from Network Management; and Saibeth Walls, Graham Holt, Nathan Morelli and Chris Ford from Innovation and Technology. \$5,000 was donated to Can:Do 4Kids to go towards the Cora Barclay Listening and Spoken Language Program.



1. Jake and Raffles from Australian Lions Hearing Dogs
2. Vicki Skidmore, Kaiden Caldicott, Vicki Shearer, Archangelo Sangu, Anthony von der Borch and Jessica Vonthethoff at Loud Shirt Day



**Can:Do 4Kids**  
Providing  
**cora barclay**  
Listening & Spoken Language Program



# Our COVID-19 response

The Foundation Committee met for the last time in 2020 in the first week of December and after much discussion, decided to donate final funds for the year to charities that had been significantly impacted by COVID-19, either seeing a reduction in income or an increased demand for their services.

Our employees had continued their dedicated support of the South Australian community all year, and particularly with payroll donations, we were able to donate our final \$35,000 of the year to help bridge the gap created by COVID-19 restrictions for some of our charity partners.

\$5,000 each was donated to Backpacks 4 SA Kids, Breakthrough Mental Health Research Foundation, Catherine House, Foodbank SA, Hutt St Centre, MND SA and UnitingSA Port Adelaide.



# About our Foundation



## The SA Power Networks Employee Foundation is established as a charitable trust.

The Trustees of the Foundation are Executive Managers of SA Power Networks. Day-to-day management of the Foundation is vested in the Management Committee, which consists of three people nominated by the Trustees and eight employee-elected representatives, who each volunteer their time. We would like to welcome Jessica Vonthethoff who joined as a Trustee in 2020. A special thank you to Mark Clarke who served 13 years as Treasurer of the Foundation and will be retiring in 2021.

## Our Trustees in 2020



**Rob Stobbe**



**Jessica Vonthethoff**



**Richard Amato**

## 2020 Management Committee



**David Syme**  
Chairperson



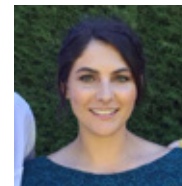
**Vicki Shearer**  
Executive Officer



**Mark Clarke**  
Treasurer



**Peter Chapple**  
Deputy Chair



**Angie Gouras**



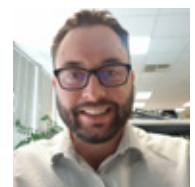
**Cameron Daniell**



**David Paynter**



**Mel Toyer**



**Michael Robran**



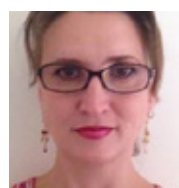
**Nic Bishop**



**Suzie Lochert**



**Zoe Smith**



**Sharon Michelmores**  
Secretary

# Lifetime Achievement Awards



**Awarded to people whose contribution is considered so significant it has made a lifetime impact on our work.**

## Existing Lifetime Achievement Award Winners

|                   |                      |               |                 |
|-------------------|----------------------|---------------|-----------------|
| Ajay Pradhan      | Glyne Smalldon       | Lew Owens     | Russell Duncan  |
| Belinda Bryan     | Helen Tumes          | Mark Clarke   | Sean Kelly      |
| Ben Kempster      | Ian Bowen            | Mark Vincent  | Simon Blom      |
| Brian Docking     | Ian Bowman           | Mel Toyer     | Steve McDonnell |
| Brian Whyte       | Ian Rowe             | Mel Worrall   | Suzie Lochert   |
| Colin Pearce      | Jim McCartney        | Paul Topping  | Terry Parsons   |
| Darren Warmington | Joe Hayden           | Peter Chapple | Vicki Shearer   |
| David Skein       | Joe Snook            | Phil Fechner  | Vicki Skidmore  |
| David Syme        | Julia Sagoleo        | Rob Snowdon   |                 |
| Doug Schmidt      | Ketsanay Vongphachan | Rob Stobbe    |                 |

## New Lifetime Achievement Award recipients in 2020



**Mike Lucas**

Mike has been raising funds for charities in South Australia through book sales (either his own books or books from his store) for five years, resulting in over \$6,000 in donations across five different charities.



**Kev Connell**

Kev's Top 8 Footy tipping competition has run for five years and resulted in over \$13,000 in donations to Childhood Cancer Association.

# Financial report



## Income Statement For the year ended 31 December 2020

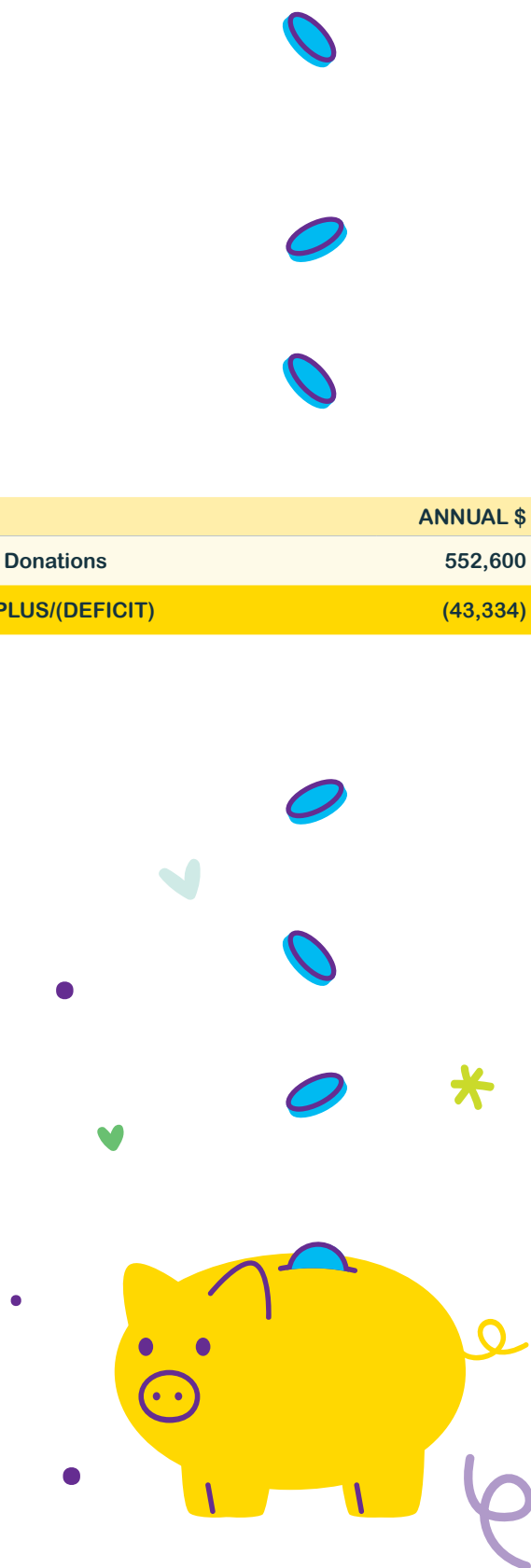
| Income                              |                |
|-------------------------------------|----------------|
|                                     | ANNUAL \$      |
| Donations (Payroll)                 | 218,028        |
| Donations (SA Power Networks)       | 50,435         |
| Donations (Other)                   | 47,233         |
| Fundraising (Corporate)             | 106,353        |
| Fundraising (Workplace Initiatives) | 86,045         |
| Interest                            | 1,172          |
| <b>Total Income</b>                 | <b>509,266</b> |

| Outgoings                                      |                |
|------------------------------------------------|----------------|
| Donations (Corporate)                          | ANNUAL \$      |
| Australian Lions Hearing Dogs                  | 20,000         |
| Backpacks 4 SA Kids                            | 15,000         |
| Breakthrough Mental Health Research Foundation | 30,000         |
| Cancer Council SA                              | 35,000         |
| Can:Do 4Kids                                   | 5,000          |
| Catherine House                                | 5,000          |
| Childhood Cancer Association                   | 10,000         |
| Foodbank SA                                    | 5,000          |
| Hutt St Centre                                 | 17,500         |
| Mary Potter Foundation                         | 10,000         |
| Motor Neurone Disease Association of SA        | 13,400         |
| Nature Foundation                              | 20,000         |
| Orana                                          | 5,000          |
| Puddle Jumpers                                 | 2,000          |
| Royal Society for the Blind                    | 22,000         |
| SCOSA                                          | 13,100         |
| Second Chances SA                              | 5,000          |
| Share the Dignity                              | 5,000          |
| State Emergency Relief Fund                    | 75,257         |
| St Vincent de Paul Society                     | 3,000          |
| UnitingSA Port Adelaide                        | 11,830         |
| Women's and Children's Hospital Foundation     | 47,500         |
| Zahra Foundation                               | 7,500          |
| <b>Total Donations (Corporate)</b>             | <b>383,087</b> |



| Donations (Workplace Initiatives)              | ANNUAL \$      |
|------------------------------------------------|----------------|
| Adelaide Koala and Wildlife Hospital           | 1,600          |
| Backpacks 4 SA Kids                            | 3,600          |
| Beyond Blue                                    | 3,000          |
| BlazeAid                                       | 600            |
| Breakthrough Mental Health Research Foundation | 640            |
| Cancer Council SA                              | 3,580          |
| Catherine House                                | 2,500          |
| Childhood Cancer Association                   | 5,500          |
| Children's Medical Research Institute          | 1,900          |
| Cystic Fibrosis SA                             | 11,000         |
| Foodbank SA                                    | 7,200          |
| Garvan Research Foundation                     | 11,000         |
| Guide Dogs SA/NT                               | 500            |
| Headspace                                      | 8,100          |
| Hospital Research Foundation                   | 11,833         |
| Hutt St Centre                                 | 10,300         |
| Leukaemia Foundation                           | 9,500          |
| Lucky Little Paws Rescue and Adoption          | 1,100          |
| Mary Potter Foundation                         | 12,300         |
| Motor Neurone Disease Association of SA        | 6,300          |
| Movember Foundation                            | 20,700         |
| Nature Foundation                              | 18,160         |
| Ovarian Cancer Research Foundation             | 4,100          |
| Rescue Me Whiskers and Paws                    | 1,100          |
| Royal Society for the Blind                    | 2,500          |
| Second Chances SA                              | 1,800          |
| White Ribbon Australia                         | 1,700          |
| Women's and Children's Hospital Foundation     | 7,400          |
| <b>Total Donations (Workplace Initiatives)</b> | <b>169,513</b> |

|                          | ANNUAL \$       |
|--------------------------|-----------------|
| <b>Total Donations</b>   | <b>552,600</b>  |
| <b>SURPLUS/(DEFICIT)</b> | <b>(43,334)</b> |



## Cumulative donations to charities

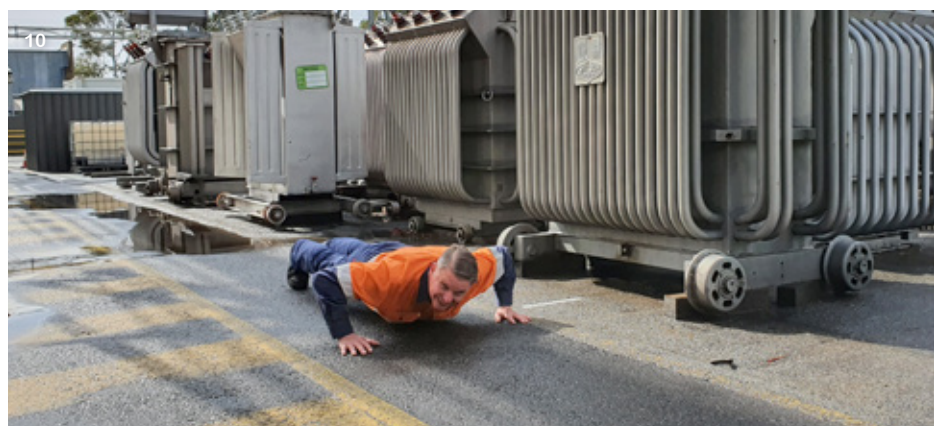
| Charity                                        | New cumulative total 2020 (\$) |
|------------------------------------------------|--------------------------------|
| Cancer Council SA                              | 1,086,864                      |
| Women's and Children's Hospital Foundation     | 353,664                        |
| Mary Potter Foundation                         | 228,053                        |
| Hutt St Centre                                 | 221,609                        |
| Hospital Research Foundation                   | 208,633                        |
| Leukaemia Foundation                           | 121,900                        |
| Nature Foundation                              | 100,762                        |
| Red Cross Bushfire Appeal                      | 85,394                         |
| Backpacks 4 SA Kids                            | 85,200                         |
| UnitingSA Port Adelaide                        | 75,892                         |
| State Emergency Relief Fund                    | 75,257                         |
| Can:Do 4Kids                                   | 74,180                         |
| Australian Lions Hearing Dogs                  | 58,095                         |
| Movember Foundation                            | 56,330                         |
| Childhood Cancer Association                   | 55,530                         |
| Red Cross Disaster Relief Fund                 | 54,630                         |
| Catherine House                                | 54,085                         |
| Breakthrough Mental Health Research Foundation | 47,040                         |
| Motor Neurone Disease Association of SA        | 46,820                         |
| Asthma Foundation SA                           | 46,700                         |
| Royal Society for the Blind                    | 38,300                         |
| Share the Dignity                              | 36,170                         |
| Operation Flinders Foundation                  | 33,595                         |
| SCOSA                                          | 31,100                         |
| Zahra Foundation                               | 30,800                         |
| Orana                                          | 30,600                         |
| St Vincent de Paul Society                     | 29,208                         |
| Canteen                                        | 25,323                         |
| Lifeline                                       | 23,750                         |
| ISKON                                          | 20,300                         |
| Flinders Foundation                            | 20,000                         |
| Fauna Rescue SA                                | 20,000                         |
| Second Chances SA                              | 17,300                         |
| Cystic Fibrosis SA                             | 15,200                         |
| Beyond Blue                                    | 14,700                         |
| Cancer Care Centre                             | 14,500                         |
| HeartKids SA/NT                                | 14,400                         |
| Glenelg Surf Life Saving Club                  | 13,200                         |
| Animal Welfare League                          | 12,500                         |
| Foodbank SA                                    | 12,400                         |
| The Trustee for Rocket Trust                   | 11,700                         |
| Royal Flying Doctor Service                    | 11,625                         |

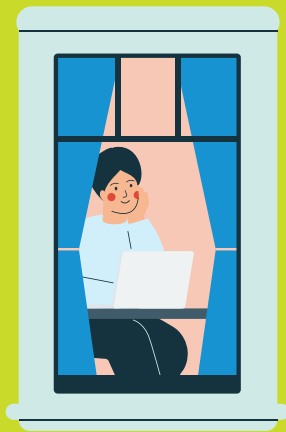
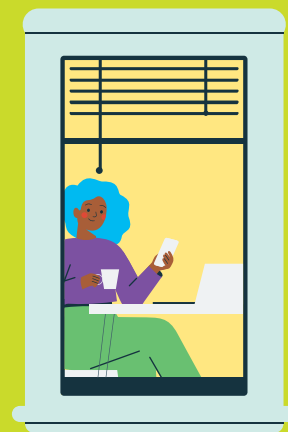
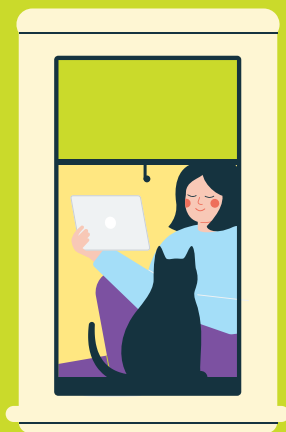
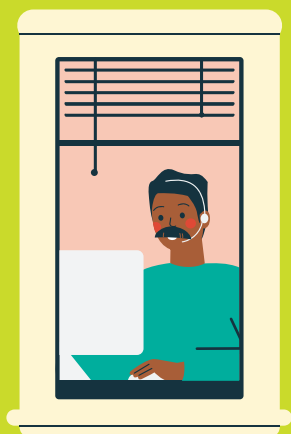
|                                        |                  |
|----------------------------------------|------------------|
| Garvan Institute Foundation            | 11,000           |
| Pinery Bushfire Appeal                 | 11,000           |
| Alzheimers Australia                   | 10,100           |
| Jodi Lee Foundation                    | 9,800            |
| Ovarian Cancer Association             | 9,510            |
| Autism SA                              | 9,130            |
| Riding for the Disabled Association SA | 9,000            |
| Still Aware                            | 8,400            |
| Headspace                              | 8,100            |
| White Ribbon Australia                 | 6,640            |
| Australian Kidney Foundation           | 6,500            |
| Variety Children's Charity             | 6,300            |
| Julian Burton Burns Trust              | 6,260            |
| Parkinsons SA                          | 6,100            |
| Sturt CFS                              | 6,100            |
| The Smith Family                       | 6,000            |
| Avner Pancreatic Cancer Foundation     | 5,700            |
| Ski for Life                           | 5,600            |
| RSPCA                                  | 5,300            |
| Cat Adoption Foundation                | 5,100            |
| CFS Foundation                         | 5,000            |
| Legacy                                 | 5,000            |
| National Breast Cancer Foundation      | 4,280            |
| Ovarian Cancer Research Foundation     | 4,100            |
| Starlight Foundation                   | 4,060            |
| Life's Little Treasures                | 4,000            |
| Ronald McDonald House                  | 3,600            |
| Guide Dogs SA/NT                       | 3,500            |
| KickStart for Kids                     | 3,000            |
| Rare Cancers Australia                 | 3,000            |
| OzHarvest                              | 2,300            |
| YWCA Adelaide                          | 2,300            |
| Puddle Jumpers                         | 2,000            |
| Heart Foundation                       | 2,000            |
| Children's Medical Research Institute  | 1,900            |
| Dry July Foundation                    | 1,800            |
| Adelaide Koala and Wildlife Hospital   | 1,600            |
| Seacliff Surf Life Saving Club         | 1,502            |
| Lucky Little Paws Rescue and Adoption  | 1,100            |
| Rescue Me Whiskers and Paws            | 1,100            |
| Make a Wish Foundation                 | 1,000            |
| Crows Children's Foundation            | 860              |
| Little Heroes Foundation               | 840              |
| MS Society SA/NT                       | 740              |
| BlazeAid                               | 600              |
| Welcome to Australia                   | 200              |
| <b>Total as at 31/12/2020</b>          | <b>3,827,131</b> |





1. Steve Logos - Push-Up Challenge
2. Vicki Shearer, Mel Toyer, Colin McIver and Rob Stobbe - Relay For Life
3. Isabell Al-Nahat - Backpacks 4 SA Kids
4. Michael Robran and his family - Relay For Life
5. Prakhar Dwivedi - World's Greatest Shave
6. Foodbank SA volunteering
7. Chris Ford - Loud Shirt Day
8. Alex Bond and Vicki Skidmore - Frocktober
9. Leigh Cardinal and Sharon Michelmor - Frocktober
10. Joe Snook - Push-Up Challenge





## EMPLOYEE FOUNDATION

SA Power Networks  
Enerven

**SA Power Networks Employee Foundation**  
GPO Box 77 Adelaide SA 5001

**Location** 1 Anzac Highway, Keswick SA 5035

[employeefoundation@sapowernetworks.com.au](mailto:employeefoundation@sapowernetworks.com.au)

[www.sapowernetworks.com.au/employeefoundation](http://www.sapowernetworks.com.au/employeefoundation)

[www.facebook.com/SAPowerNetworksEmployeeFoundation](https://www.facebook.com/SAPowerNetworksEmployeeFoundation)