

Flexible Exports Trial

Enabling more solar for South Australians

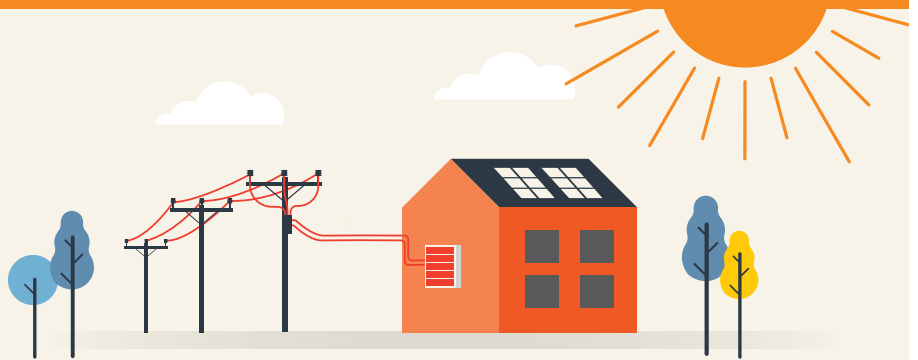


Our Goal: To double the amount of Solar on our network by 2025

It's a challenging goal.

Excess solar exports can lead to:

- ⊖ unstable electricity supply
- ⊖ local voltage issues
- ⊖ potentially wider outages



The Solution: Flexible Exports

Solar exports automatically adjust to match the available capacity on the network.

No change for current solar customers.

New and upgrading solar customers connecting in overloaded areas can choose a new Flexible Export option (up to 10kW) or a flat Fixed Export option (1.5kW).

What does this mean for you? It's simple.

1

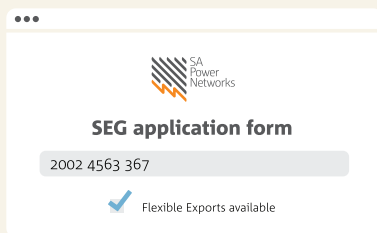
Check if your customer is offered the new Flexible/Fixed export option

2

Talk to them about these options

3

Select the preferred option when applying



Look up their NMI on our SEG application form

NEW and UPGRADING CUSTOMERS

connecting in overloaded areas can choose between:

FLEXIBLE EXPORTS

Export up to

10.00 kW

Must use compatible smart solar systems

FIXED

Export up to

01.50 kW

Must use approved export limiting inverter device



Flexible Exports

- ✓ greater exports into the network
- ✓ variable exports up to 10kW per phase
- ✓ safer and more reliable electricity supply
- ✓ allows more people to benefit from solar
- ✓ world-leading technology
- ✓ more renewable energy in South Australia

Find out more: sapowernetworks.com.au/industry/flexible-exports