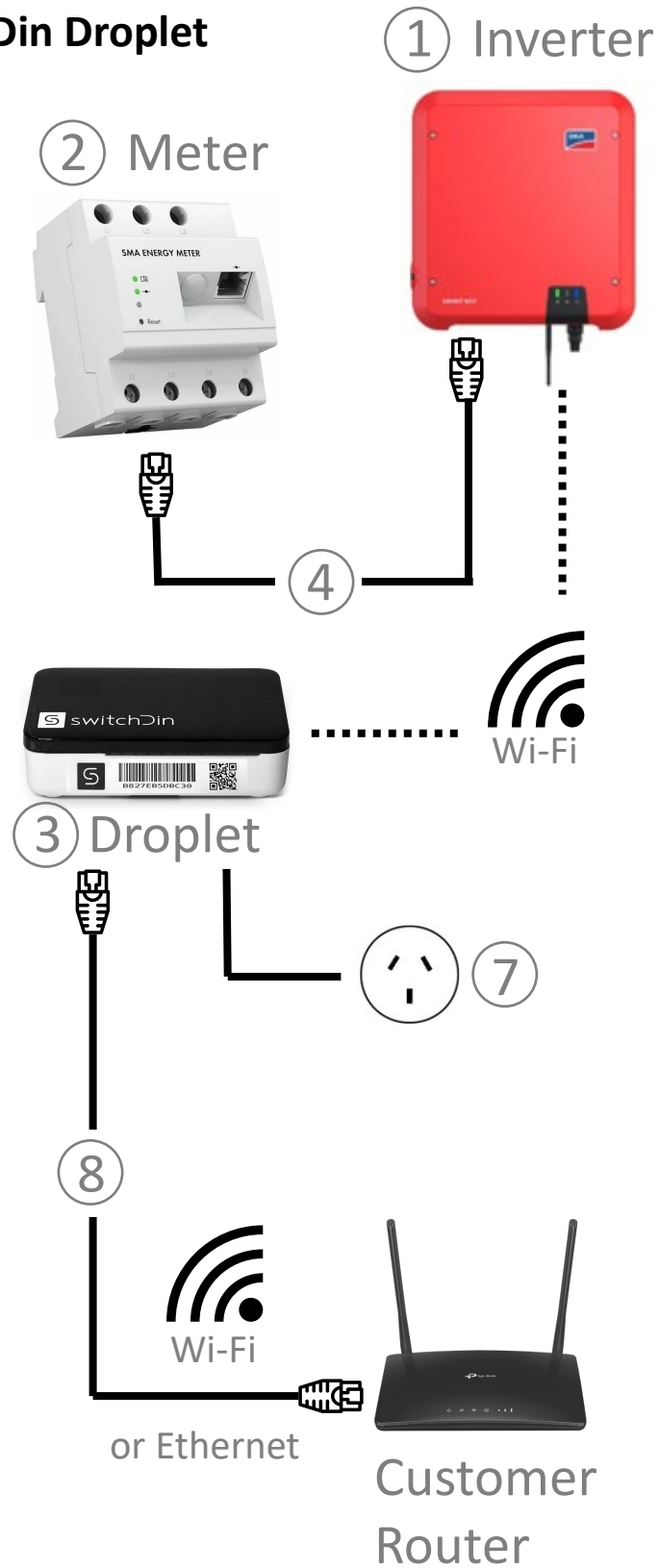


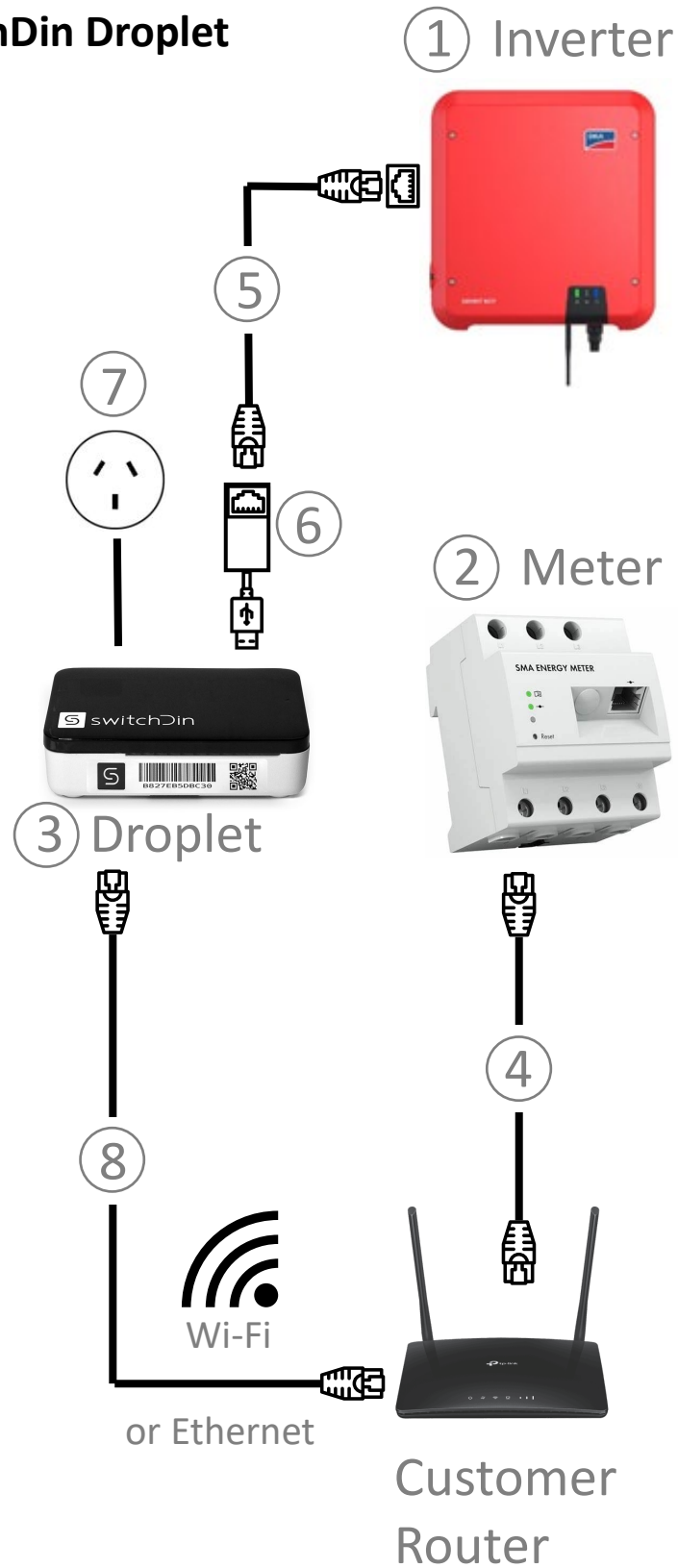
SMA inverter and SwitchDin Droplet option 1



What to bring

Number	Equipment	Comment
1	SMA Sunny Boy 3.0-6.0kW	
2	SMA Energy Meter	Refer to compatible technology list
3	SwitchDin Droplet and power adaptor	
4	CAT5/6 cable (inverter to meter)	
5	Ethernet cable (inverter to droplet)	Not required under Wi-Fi configuration
6	USB to ethernet adaptor	Not required under Wi-Fi configuration
7	GPO for Droplet	May already exist depending on droplet location
8	Ethernet cable (droplet to router)	Not required under Wi-Fi configuration

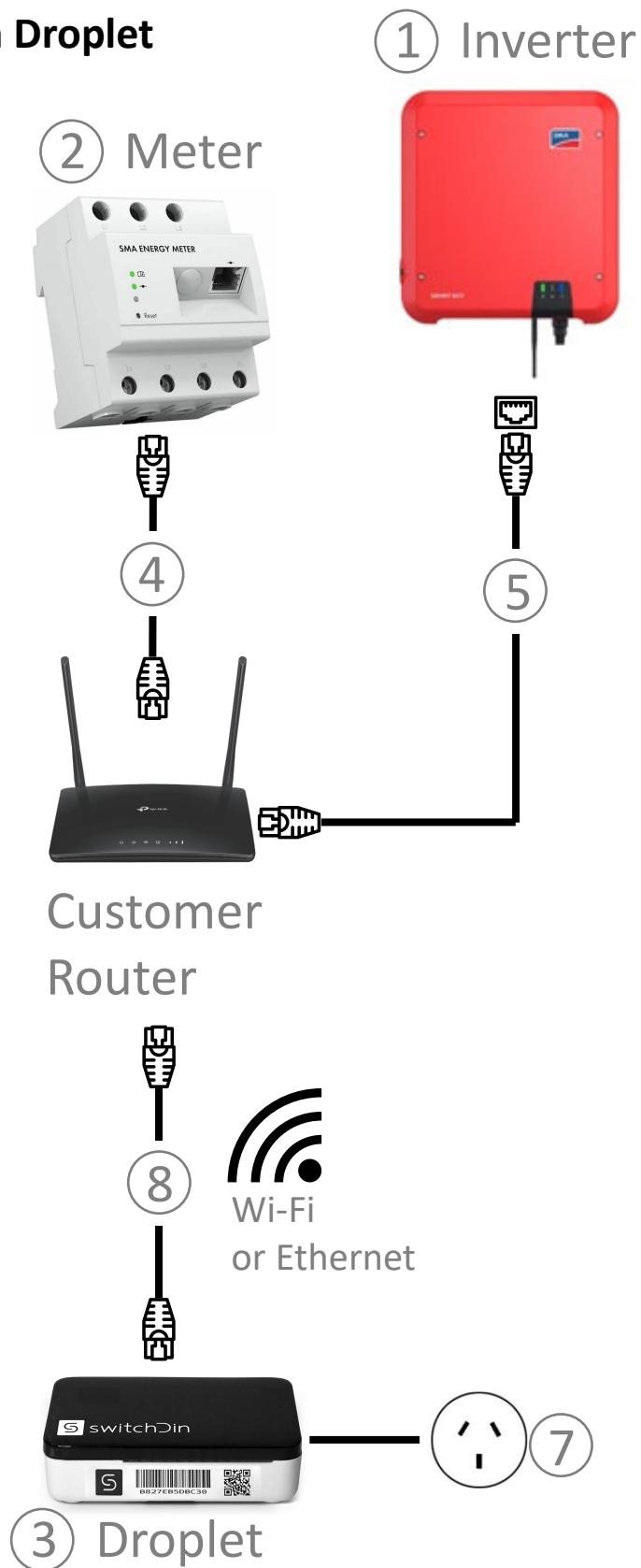
SMA inverter and SwitchDin Droplet option 2



What to bring

Number	Equipment	Comment
1	SMA Sunny Boy 3.0-6.0kW	
2	SMA Energy Meter	Refer to compatible technology list
3	SwitchDin Droplet and power adaptor	
4	CAT5/6 cable (router to meter)	
5	Ethernet cable (inverter to droplet)	Not required under Wi-Fi configuration
6	USB to ethernet adaptor	Not required under Wi-Fi configuration
7	GPO for Droplet	May already exist depending on droplet location
8	Ethernet cable (droplet to router)	Not required under Wi-Fi configuration

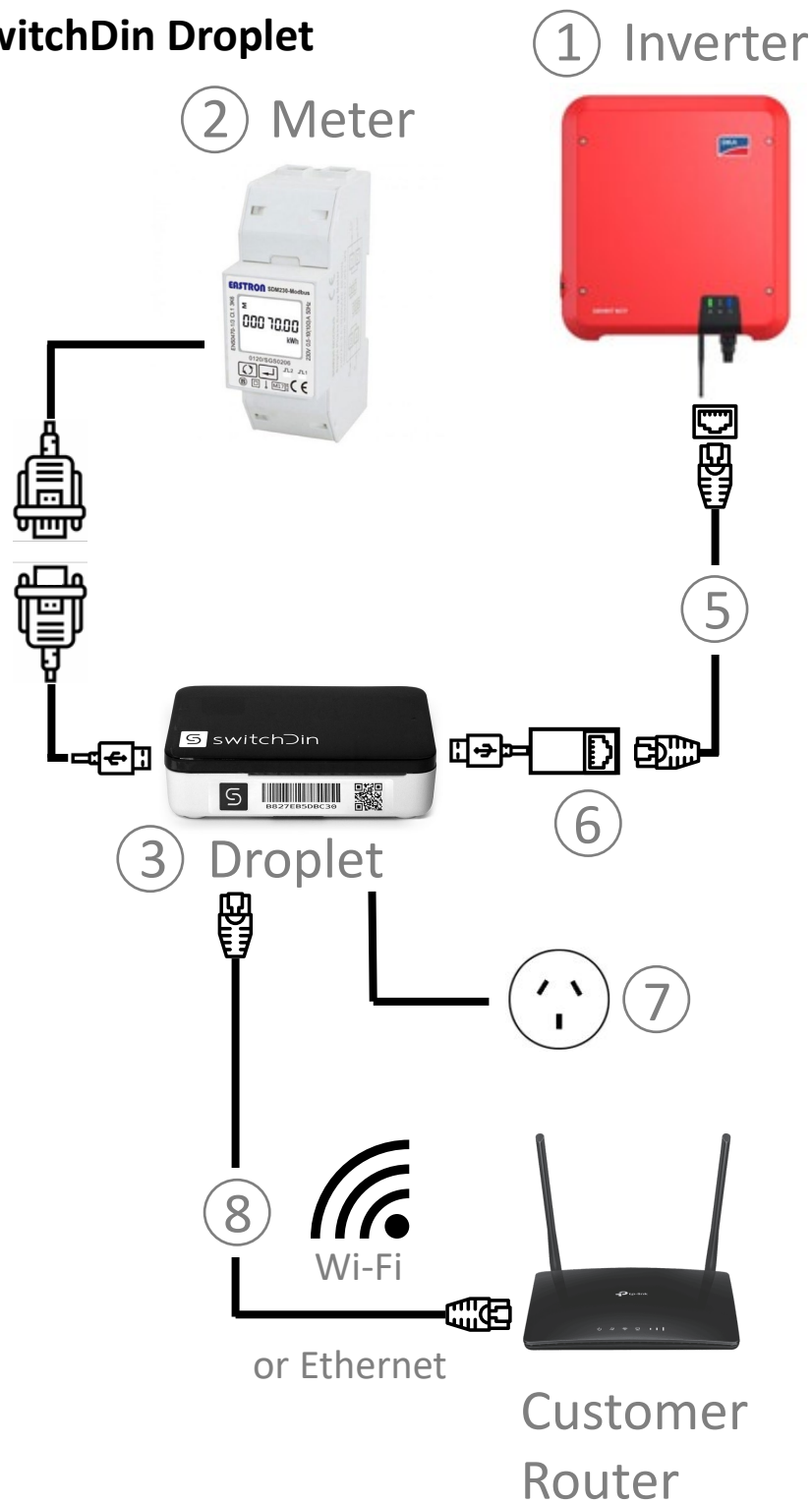
SMA inverter and SwitchDin Droplet option 3



What to bring

Number	Equipment	Comment
1	SMA Sunny Boy 3.0-6.0kW	
2	SMA Energy Meter	Refer to compatible technology list
3	SwitchDin Droplet and power adaptor	
4	CAT5/6 cable (router to meter)	
5	Ethernet cable (inverter to router)	Not required under Wi-Fi configuration
6	USB to ethernet adaptor	Not required under Wi-Fi configuration
7	GPO for Droplet	May already exist depending on droplet location
8	Ethernet cable (droplet to router)	Not required under Wi-Fi configuration

SMA inverter and SwitchDin Droplet option 4



What to bring

Number	Equipment	Comment
1	SMA Sunny Boy 3.0-6.0kW	
2	Eastron SDM-230	Refer to compatible technology list
3	SwitchDin Droplet and power adaptor	
4	CAT5/6 cable (router to meter)	
5	Ethernet cable (inverter to droplet)	Not required under Wi-Fi configuration
6	USB to ethernet adaptor	Not required under Wi-Fi configuration
7	GPO for Droplet	May already exist depending on droplet location
8	Ethernet cable (droplet to router)	Not required under Wi-Fi configuration