

Insulator Pollution

Community Meeting, Minlaton

17 February 2026





Acknowledgement of Country

SA Power Networks acknowledges the multiple Traditional Owners of the lands that host the South Australian electricity network and their connections to land, sea, and community.

We would also like to pay our respects to all First Nations peoples past and present, acknowledging their deep connection to Country, Culture and Community.

Connection With Country, 2025 by Kelly Taylor & T'Keyah Ware

SA Power Networks Team



Andrew Bills
CEO SA Power Networks



Mark Vincent
Chief Operating Officer



Matt Napolitano
Head of Asset Operations



Kym Williams
Network Reliability Operations
Manager



Mark Pynn
Head of Asset Investment



Sophie McRae
Head of Customer Experience



Darren Milligan
Asset Condition &
Performance Manager



Chris Bennett
Operations Manager - Upper
North/Yorke

A word from Fraser Ellis MP and Andrew Bills



Fraser Ellis MP
Member for Narungga



CEO Andrew Bills
SA Power Networks

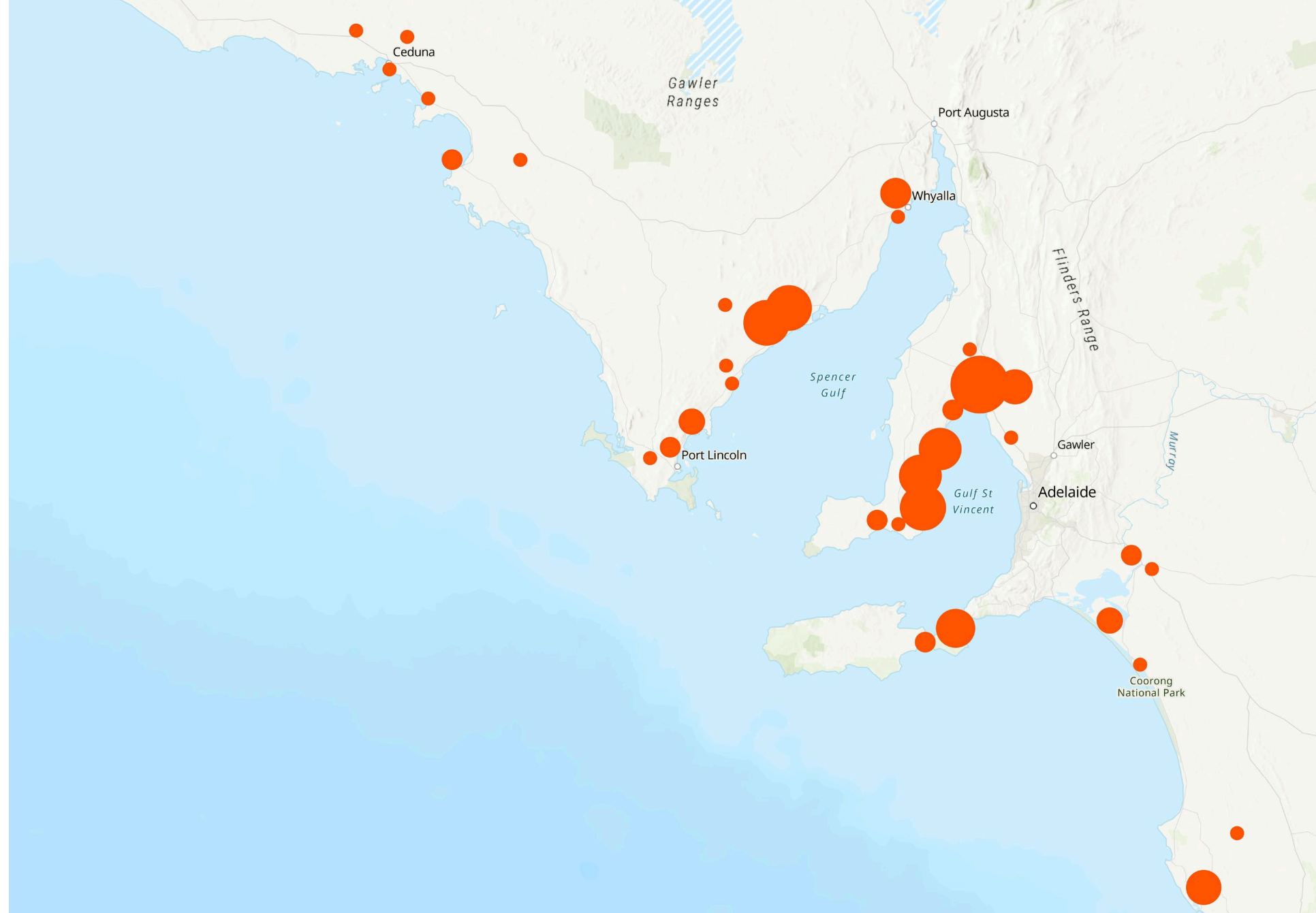
The issue – what it is

- Insulators secure powerlines while preventing electric current from flowing into the pole and to the ground
- Built up dust, dirt and salt – combined with dew – can create a conductive path (a “flashover”)
- This issue emerged at scale in summer 2024/25 as a weather-driven, system-wide reliability issue
- What we believe has changed, based on current understanding:
 - Climatic changes: longer periods without rain and rising sea temperatures
 - Undetected impacts of last year’s pollution event



The breadth of the issue – what we're seeing

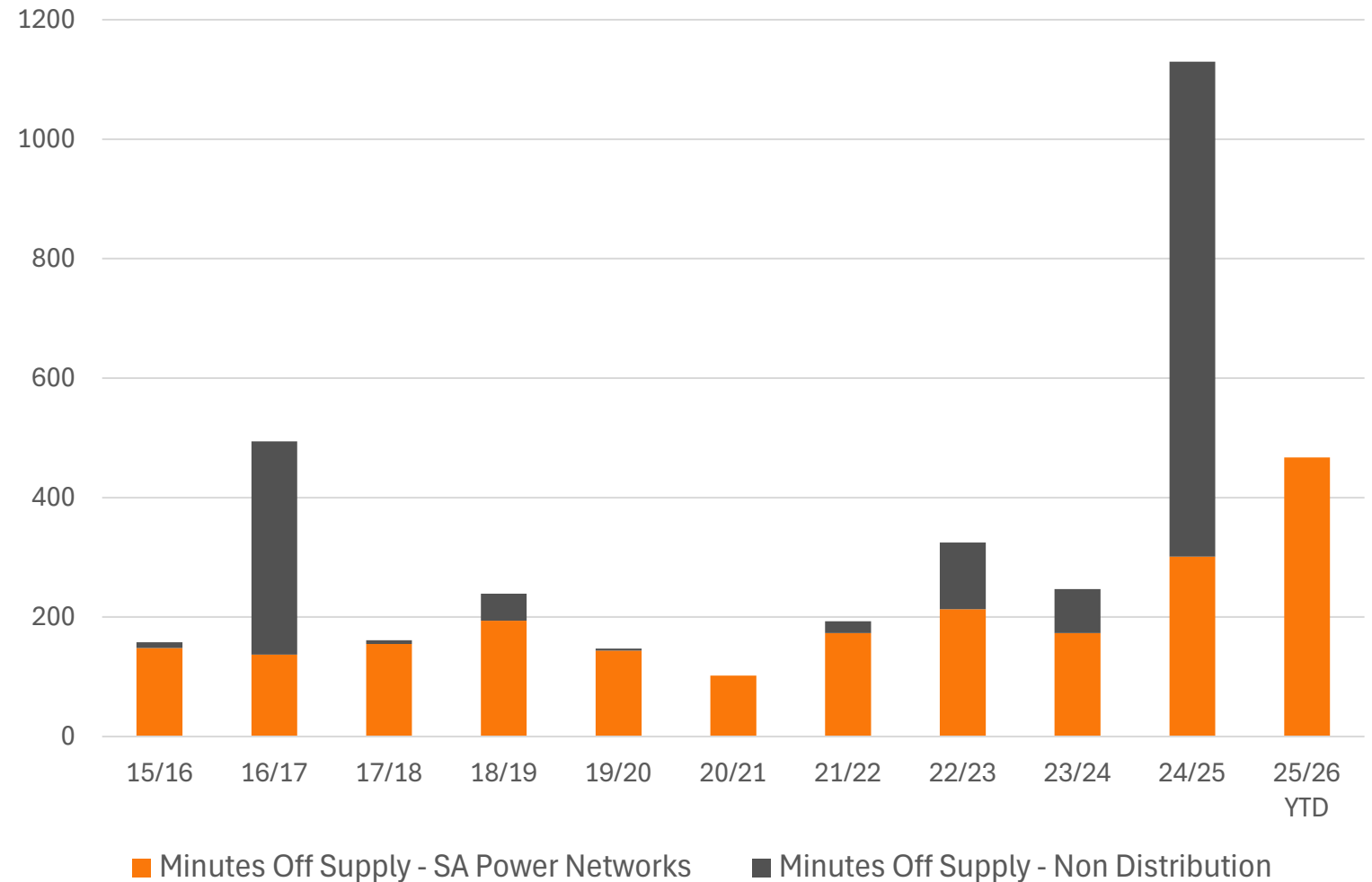
- Predominantly impacting coastal powerlines
- **State-wide:** Approx 6,000 km of line, potentially 52,000 insulators impacted
- **YP:** Approx 960 km of line, 16,800 insulators
- Limited to 33kv and 19kV SWER lines



Historical Reliability Performance – Yorke Peninsula

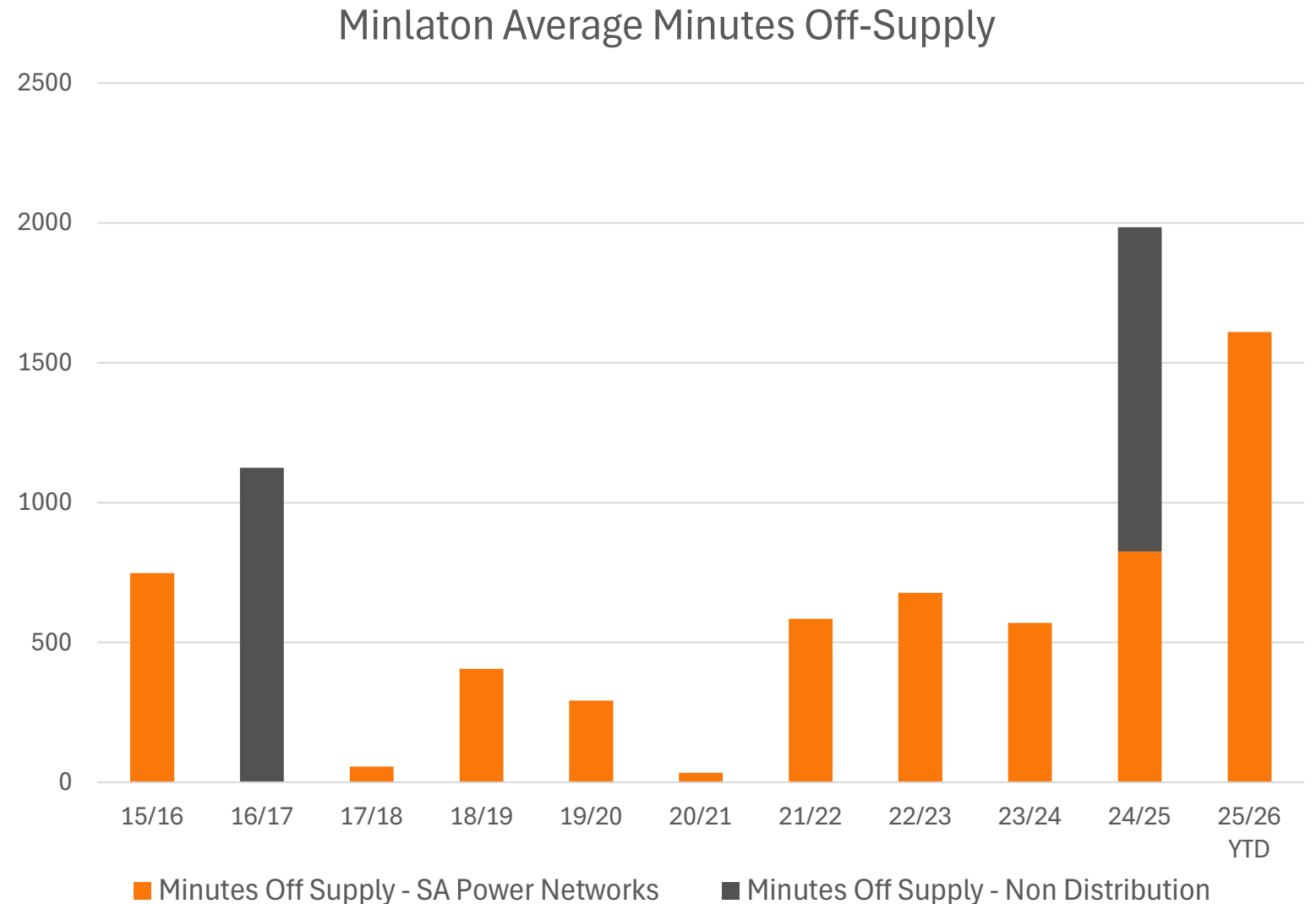
- The Yorke Peninsula network has historically met reliability performance targets
- Over the past decade, supply interruptions have largely resulted from lightning
- Performance significantly impacted by pollution related interruptions in 2024/25 and 2025/26

Yorke Peninsula Average Minutes Off-Supply



Historical Reliability Performance – Minlaton

- The reliability of supply to Minlaton is below the Yorke Peninsula average
- Minlaton has been one of the areas most affected by insulator pollution this year



Getting the power back on when it goes off

IMMEDIATE

- Daily network performance monitoring and weather forecasting
- Additional supply restoration crews available to respond to outages based on forecast weather conditions
- Deploying local mobile generation to provide backup supply for communities experiencing highest impact



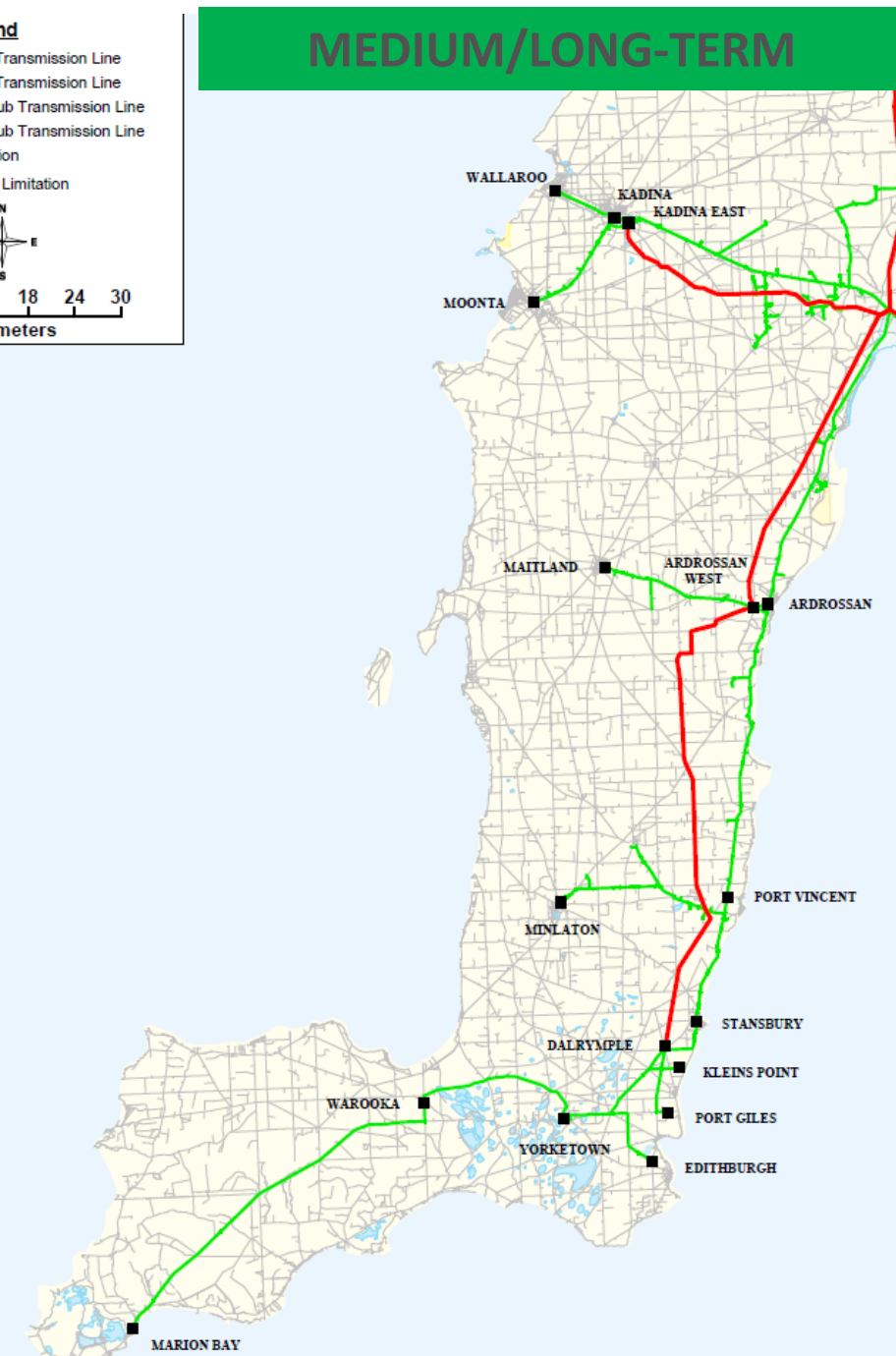
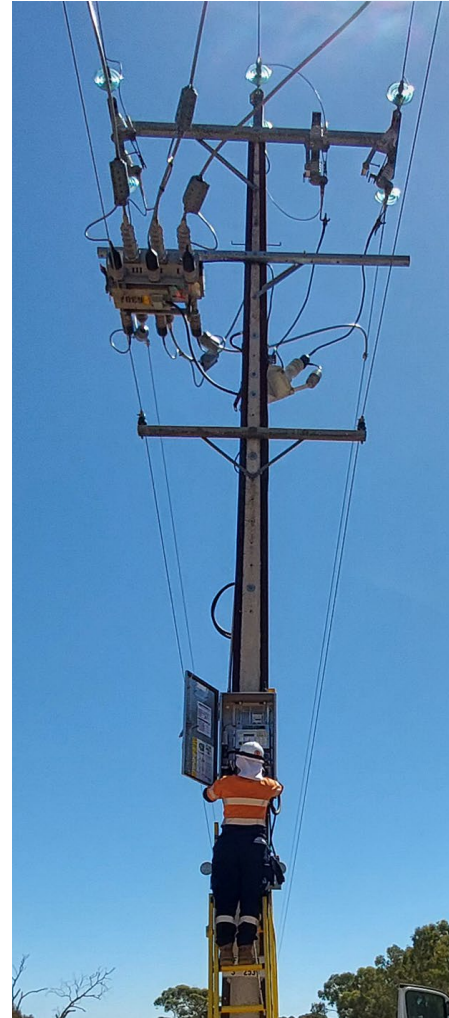
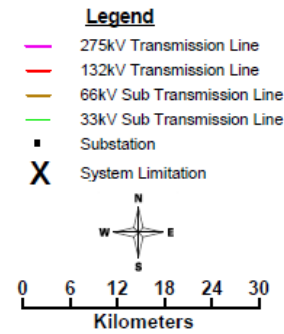
Mitigation and Remediation

- Prioritising all local crews, with additional support
- Targeted asset inspections to identify issues
- Insulator washing and targeted replacement of worst condition insulators, requiring planned interruptions
- Alternative washing methods to speed up the process, including the use of helicopters



Mitigation and Remediation

- High Voltage switches with automation
 - reduces impact when flashovers do occur
- Silicone coating of insulators (TBC)
 - reduces likelihood of flashover occurring
- Multi-year insulator upgrade program, combined with broader network rebuild
 - upgrade network with more pollution resilient insulators



Keeping you informed

- We are working to provide regular (fortnightly) updates to impacted, subscribed customers
- We will provide further information on specific operational initiatives, via direct customer communication, social and local media and at www.sapowernetworks.com.au
- We will hold further community meetings across impacted regions, and will provide a summary after those meetings
- We are currently working to improve our dedicated *Insulator Pollution* web-page as a central source of information on:
 - How we are addressing the issue
 - Planned work
 - Latest news
 - Upcoming community meetings

Insulator Pollution Webpage



Outage Updates



Q & A

